



# PROJECT B: MINIATURE TO MONSTER

ETHAN ALTSHULER

# CLIENT REQUEST

The California Science Center is opening a new exhibit titled “Miniature to Monster.” The goal of the exhibit is to increase awareness of small-scale life forms that exist in water, air, and on land. The client envisions to have the exhibited creature derived from one small animal and one large animal, combining them into a large-scale hybrid creature using open planar construction.



# PROPOSED SOLUTION

Therefore, I chose the house sparrow and the red kangaroo as the two creatures whose DNA I will be splicing. Not only do these creatures differ in size, but mainly animal classification, as one is a bird while the other is a mammal, or marsupial, which is a pouched mammal.

House sparrows typically grow about 5 to 7 inches in length. Red kangaroos can grow between 4 to 6 feet tall on average, along with a tail length spanning an additional 4 feet.

These creatures share both reddish-brown and greyish-brown color tones, which will be one significant contributing factor towards making this creature combination interesting.



# HOUSE SPARROW

*Passer domesticus*

Male ♂

Female ♀



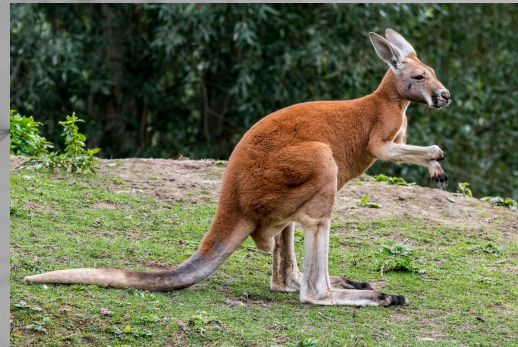
\*Males have grey chests with a black patch right below their beak along with having black eyepatches and black beaks, while females do not and are more monochromatic in tones of brown and tan\*



# RED KANGAROO

*Osphranter rufus*

Male ♂



Female ♀



\*Males have more of that reddish tone in their fur, while females have more of a greyish tone and have pouches to carry their joeys\*

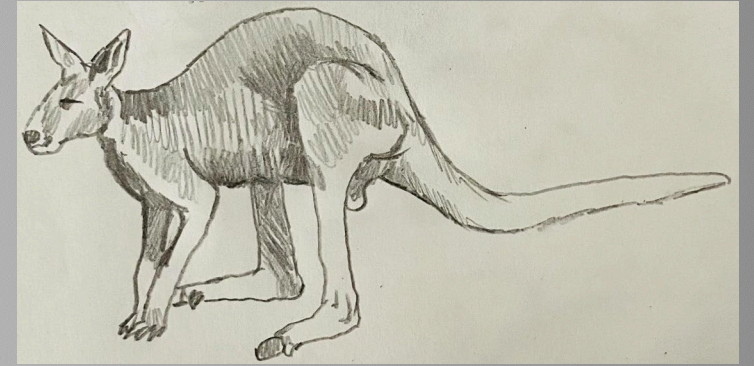


# HOUSE SPARROW STUDIES





# RED KANGAROO STUDIES



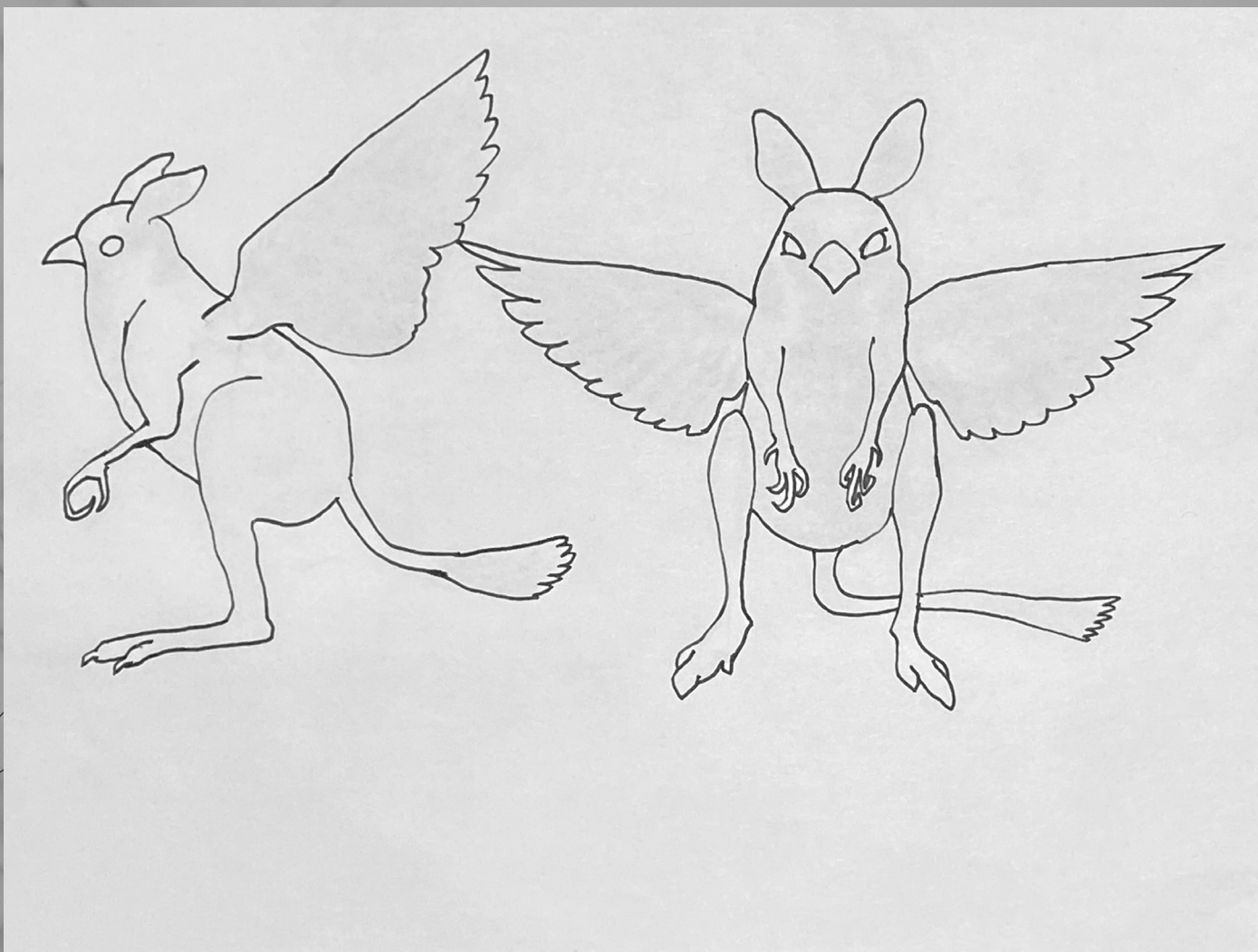


# HYBRID CREATURE SKETCHES



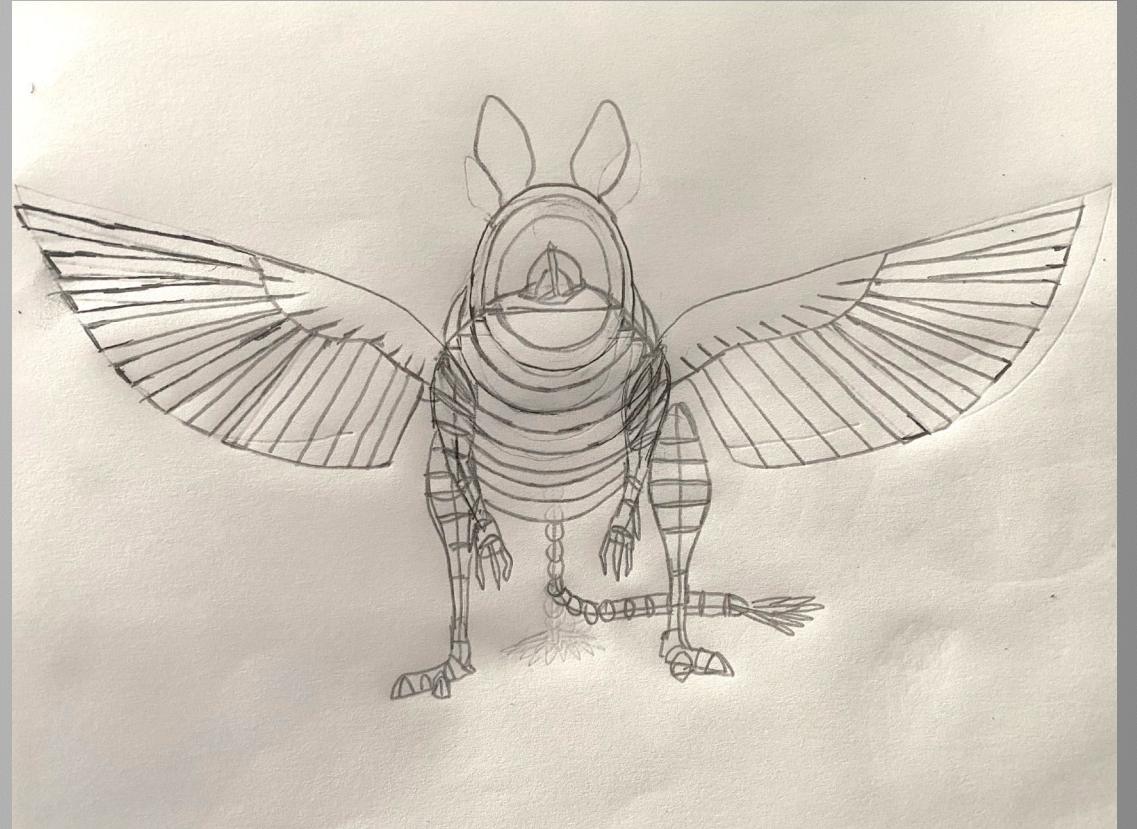
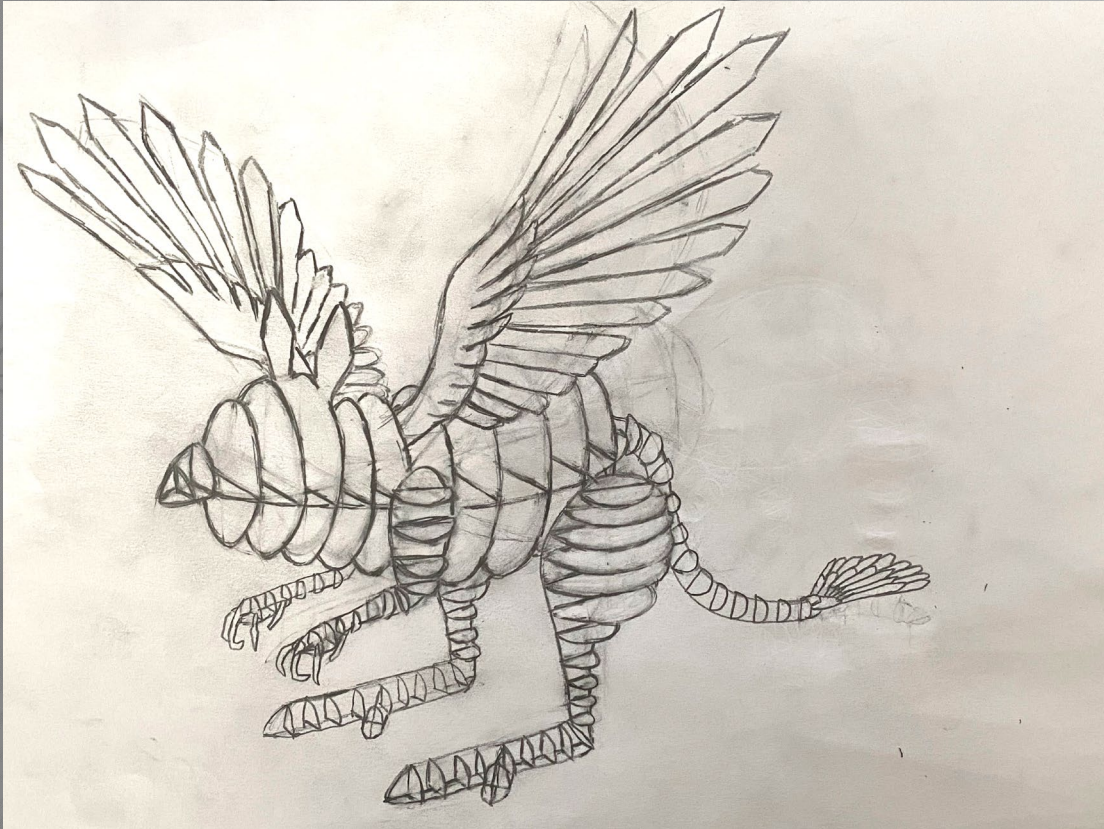


# OUTLINES



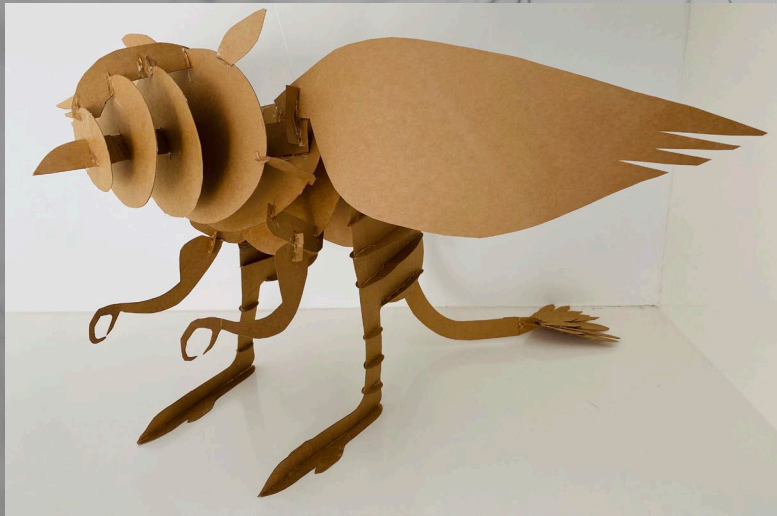


# PLANAR ANALYSIS





# FINISHED DESIGN





# FINISHED DESIGN





# CONCLUSION

I have spliced the DNA of a house sparrow and a red kangaroo and transformed that animal hybrid into a large-scale three-dimensional cardboard planar model using five cut sheets of 12x12" cardboard paper, which is set to be displayed at the California Science Center's new "Miniature to Monster" exhibit.

Some of the basic design principles that were considered upon constructing this model were shape, form, repetition, balance and unity.

Since the model is unable to stand firmly on its own due to the material being flimsy, I had to hang certain parts of the model using clear wire to provide proper support during camera shots so that it would stay still.



# CITATIONS

## HOUSE SPARROW IMAGES

[https://en.wikipedia.org/wiki/House\\_sparrow#/media/File:Passer\\_domesticus\\_male\\_\(15\).jpg](https://en.wikipedia.org/wiki/House_sparrow#/media/File:Passer_domesticus_male_(15).jpg)

<https://www.wildlifeillinois.org/wp-content/uploads/2018/12/House-sparrow-male.jpeg>

<https://photos.smugmug.com/Introduced-birds/House-and-Hedge-Sparrows-1/i-bvszX4K/1/e78e0eb7/L/7%20-%2018840-L.jpg>

<https://nzbirdsonline.org.nz/sites/all/files/1200599Male%20sparrow%20Hamilton.jpg>

[https://upload.wikimedia.org/wikipedia/commons/0/05/Female\\_House\\_Sparrow.jpg](https://upload.wikimedia.org/wikipedia/commons/0/05/Female_House_Sparrow.jpg)

<https://images.unsplash.com/photo-1597683490928-22e0b0549832?ixid=MnwzMjA3fDB8MHxzZWVfY2h8OHx8aG91c2UIMjBzcGFycm93fGVufDB8fDB8fA%3D%3D&ixlib=rbb-1.2.1&w=1000&q=80>

<https://images.fineartamerica.com/images/artworkimages/mediumlarge/2/female-house-sparrow-pablo-avanzini.jpg>

[https://farm9.staticflickr.com/8203/8196994266\\_7a9925ddea.jpg](https://farm9.staticflickr.com/8203/8196994266_7a9925ddea.jpg)

## RED KANGAROO IMAGES

[https://upload.wikimedia.org/wikipedia/commons/f/f1/Red\\_kangaroo\\_-\\_melbourne\\_zoo.jpg](https://upload.wikimedia.org/wikipedia/commons/f/f1/Red_kangaroo_-_melbourne_zoo.jpg)

[https://media.baamboozle.com/uploads/images/77223/1606693807\\_336910](https://media.baamboozle.com/uploads/images/77223/1606693807_336910)

[https://www.animal.photos/mamm1/kang-red\\_files/kang\\_red2.jpg](https://www.animal.photos/mamm1/kang-red_files/kang_red2.jpg)

[https://www.thoughtco.com/thmb/L7FTPqUvE3Ajwhfu\\_6tppglAOoY=/1500x1000/filters:fill\(auto,1\)/red\\_kangaroo-24c18ab08dc145f1a798abd4b820390a.jpg](https://www.thoughtco.com/thmb/L7FTPqUvE3Ajwhfu_6tppglAOoY=/1500x1000/filters:fill(auto,1)/red_kangaroo-24c18ab08dc145f1a798abd4b820390a.jpg)

[https://cdn.theculturetrip.com/wp-content/uploads/2018/04/red-kangaroo--dan-armbrust-\\_flickr.jpg](https://cdn.theculturetrip.com/wp-content/uploads/2018/04/red-kangaroo--dan-armbrust-_flickr.jpg)

[http://mountainrants.weebly.com/uploads/1/8/2/8/18281761/joey\\_orig.jpg](http://mountainrants.weebly.com/uploads/1/8/2/8/18281761/joey_orig.jpg)

<https://www.kimballstock.com/pix/ani/p/07/mam-06-mh0011-01p.jpg>

[https://1d59b73swr1flswu2v451xcx-wpengine.netdna-ssl.com/wp-content/uploads/2016/08/Female-Red-Kangaroo\\_Arthur\\_Chapman-2160x1320.png](https://1d59b73swr1flswu2v451xcx-wpengine.netdna-ssl.com/wp-content/uploads/2016/08/Female-Red-Kangaroo_Arthur_Chapman-2160x1320.png)